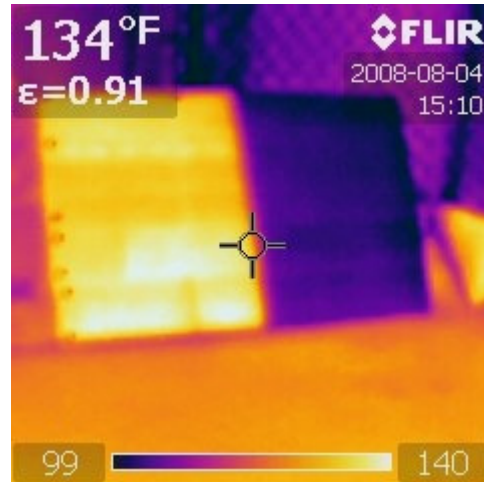
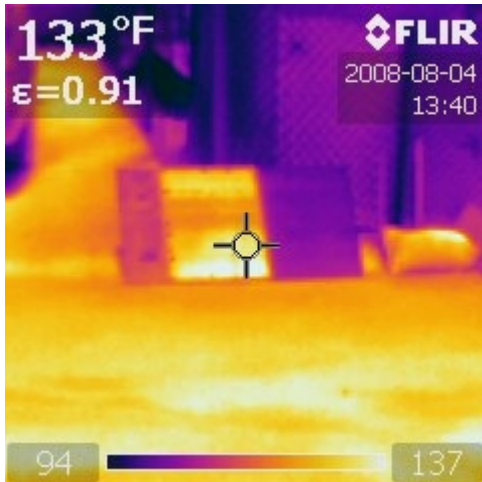
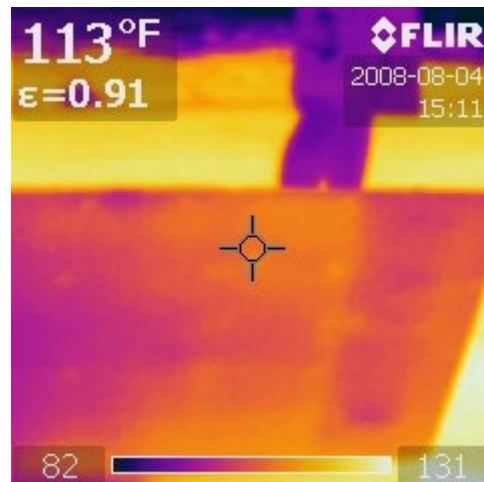
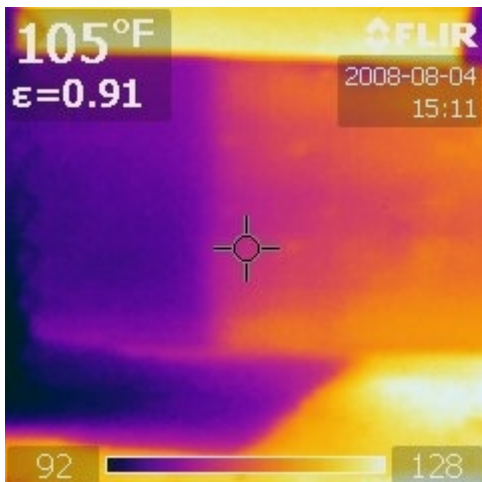




Our Roof Heat Test Prop at the 2007 Scottsdale (Arizona) Green Building Expo - October 2007. 15/32" Plywood with three different colors of asphalt shingles nailed on. The right side of the asphalt shingles is coated with 1 coat of Ceramic InsulSeal (primer) and 2 coats of Ceramic InsulCoat Roof (finish product).



The top two photos are of the front, shingled side of the same Roof Prop using an infrared camera at USMC Camp Pendleton, CA on August 4, 2008. Weather: Sunny sky with 84° F ambient temperature. Notice the coated portion (right side) has a temperature range of 94° F to 99° F (purple), while the bare asphalt shingles (left side) have a temperature range of 133° F to 134° F (yellow), representing between a 34° F to 40° F temperature difference.



These two infrared photos, taken on the same day and time, are of the backside of the same Roof Prop. Notice the temperature of the coated portion is 92° F (purple), while the bare asphalt shingles are 105° F to 113° F plus (orange), representing between a 13° F to 21° F temperature difference.